

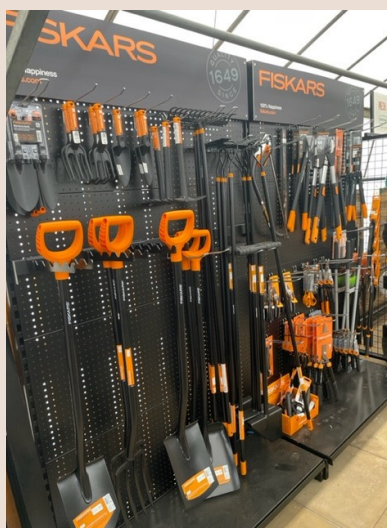
April Newsletter



Deliveries are in!

Give your garden some love with our specially selected range of garden tools and equipment to create your own little paradise.

We're now fully stocked with Darlac, Fiskars, Burgon & Ball, Kent & Stowe and Gardeners Mate tools & Accessories.



Hello April!!

This exciting month is a mix of new growth and spring awakening, thanks to the showers in April and the ground starting to become warmer you will notice a lot of plants starting to grow quite rapidly.

Generally, there is a bit more sunshine this month but still the chance of wind and showers. If you grew daffodils this year make sure to deadhead if they are starting to go over, cut the flowerhead off at the top of the stem to encourage new flower growth next year from within the bulb.

If the weather permits, start regularly mowing lawns to keep on top of growth but make sure your mower blades are at the highest point. We know you will be excited to get out in the garden after winter and don't forget those tulip bulbs planted back in November should soon be making an appearance this month!

Beautiful Pots

Make the most of your outdoor space with our stunning range of outdoor plant pots, which come in a variety of colours, sizes and materials.

We also stock a range of indoor plants, including orchids, peace lilies, jasmine, Kalanchoe, Anthurium & many more.



Chris' Tips ..



Ornamental Garden:

- Continue to remove faded flowers on spring bulbs but not the foliage until it is withered.
- Keep borders weed-free.
- Mulch borders if not completed last month.
- If the weather is mild, then trim the weak or straggly growth of sage and rosemary.
- Penstemons – cutback last year's stems down to the new growth – if the weather is very cold delay until the end of the month.
- Check evergreens for any frost damage – lightly prune if necessary.
- Look out for early aphid attacks and treat if necessary. Pests will be active outdoors as the weather gets warmer.
- Sweet peas can be directly sown now to produce plants that flower later than those sown under glass or overwintered plants.
- Prune early flowering shrubs such as forsythia etc.
- To ensure strong growth on roses apply a general fertiliser.
- Plant evergreen trees and shrubs/move existing evergreens if necessary.
- Trim back frost-damaged foliage.
- Plant summer flowering bulbs, corms and tubers including dahlia, gladioli and canna.
- Apply combined weed, feed and moss to lawns.
- Take and pot any hydrangea cuttings.

Vegetable Garden:

- Continue planting potatoes and finish planting onion sets by mid-April.
- Direct sow vegetables such as beetroot, carrots, lettuce, radish, turnip, peas, spinach and parsnip.
- Prune young stone fruit trees such as cherries and plums as leaf buds open.
- Sow tomatoes in preparation for planting outside in the summer.

April 2022

Newsletter

www.darfoulds.co.uk

Easter is coming...

Nothing says Easter like a white chocolate cheesecake a brownie filled Easter Eggs and Cream egg brownies!!!

Why not treat yourself and your family this Easter with one of our pre ordered treat boxes priced at £15 each.

Please contact the nursery to order or email info@darfoulds.com

DARFOULDS CAFE APRIL SHOWCASE



Afternoon Tea...

What's Included:

A choice of sandwiches including, Cheese & Chutney, Tuna Mayonnaise, Prawn Marie Rose, Home Cooked Ham or Chicken, BLT, Cream Cheese & Smoked Salmon.

Scone with Jam & Clotted Cream

Choice of Cake from our display

Choice of hot drink or glass of fizz

from £15.00-£18.95 contact us to book.

Homemade Cakes...

We are extremely proud of our range of cakes baked fresh daily in the coffee shop by our fabulous team.

We have all sorts of flavours including, Carrot Cake, Bakewell Tarts, Biscoff Cake, Chocolate Cake to name a few.

